



LOGIC MODELS AND OUTCOMES SESSION II

FOUNDATIONS OF EAST CHICAGO



JULY 23

BACK TO BASICS: IN-PERSON CLASS

Pre-Assessment

Post Assessment

PowerPoint

Workbook



ONLINE

BACK TO BASICS

Pre-Assessment

Post Assessment

PowerPoint

Workbook

sparkachangenow.com/fec

FOUNDATIONS OF EAST CHICAGO



JULY 23

BACK TO BASICS: IN-PERSON CLASS

Pre-Assessment

Post Assessment

PowerPoint

Workbook



ONLINE

BACK TO BASICS

Pre-Assessment

Post Assessment

PowerPoint

Workbook

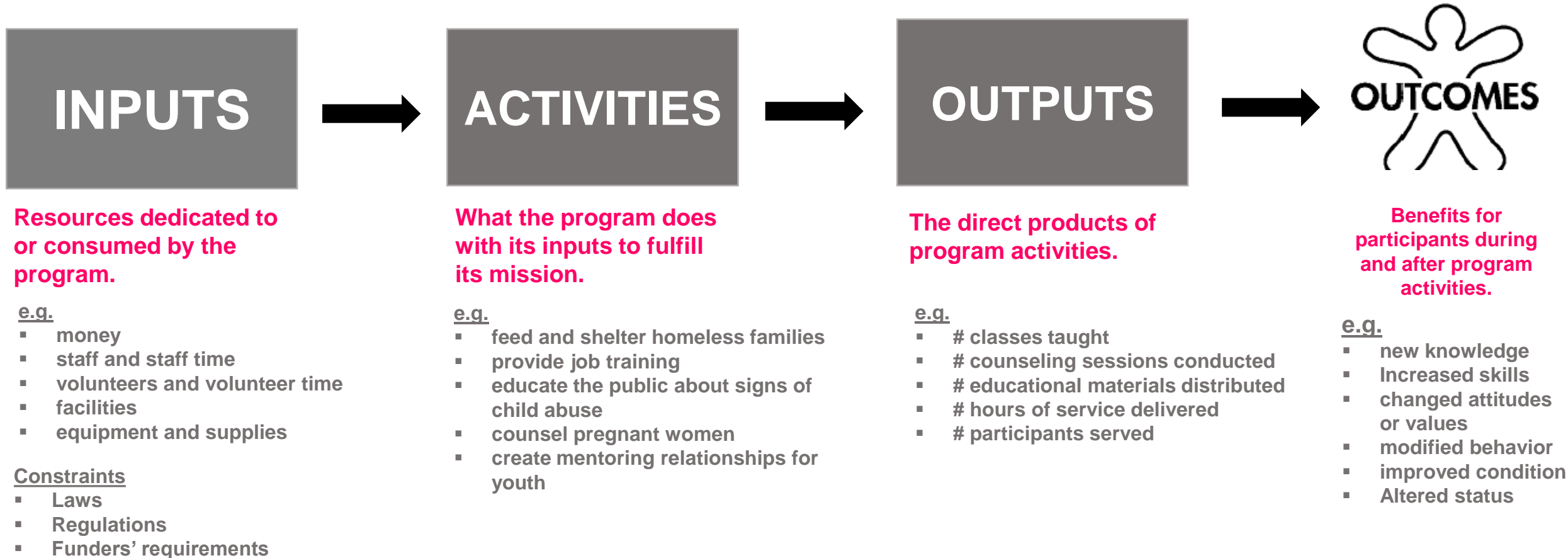
Sparkachangenow.com/fec

program logic model

Inputs		
MSW Program Manager RN Instructor	Funding Infant Care Curriculum	10 volunteers

Activities	Outputs	Short-term	Intermediate	Long-Term
Program provides parenting classes on prenatal through infant nutrition, development, safety and care taking delivered in high schools twice a week for one hour to teen mothers from 3 months to one year after delivery of child.	250 pregnant teens attend program. 72 parenting classes provided.	Teens are knowledgeable of prenatal nutrition and health guidelines.	Teens follow proper nutrition and health guidelines. Teens deliver healthy babies.	Babies achieve appropriate 12 month milestones for physical, motor, verbal and social development.
		Teens are knowledgeable of proper care, feeding and social interaction with infants.	Teens provide proper care, feeding, and social interaction to their babies.	

program logic model

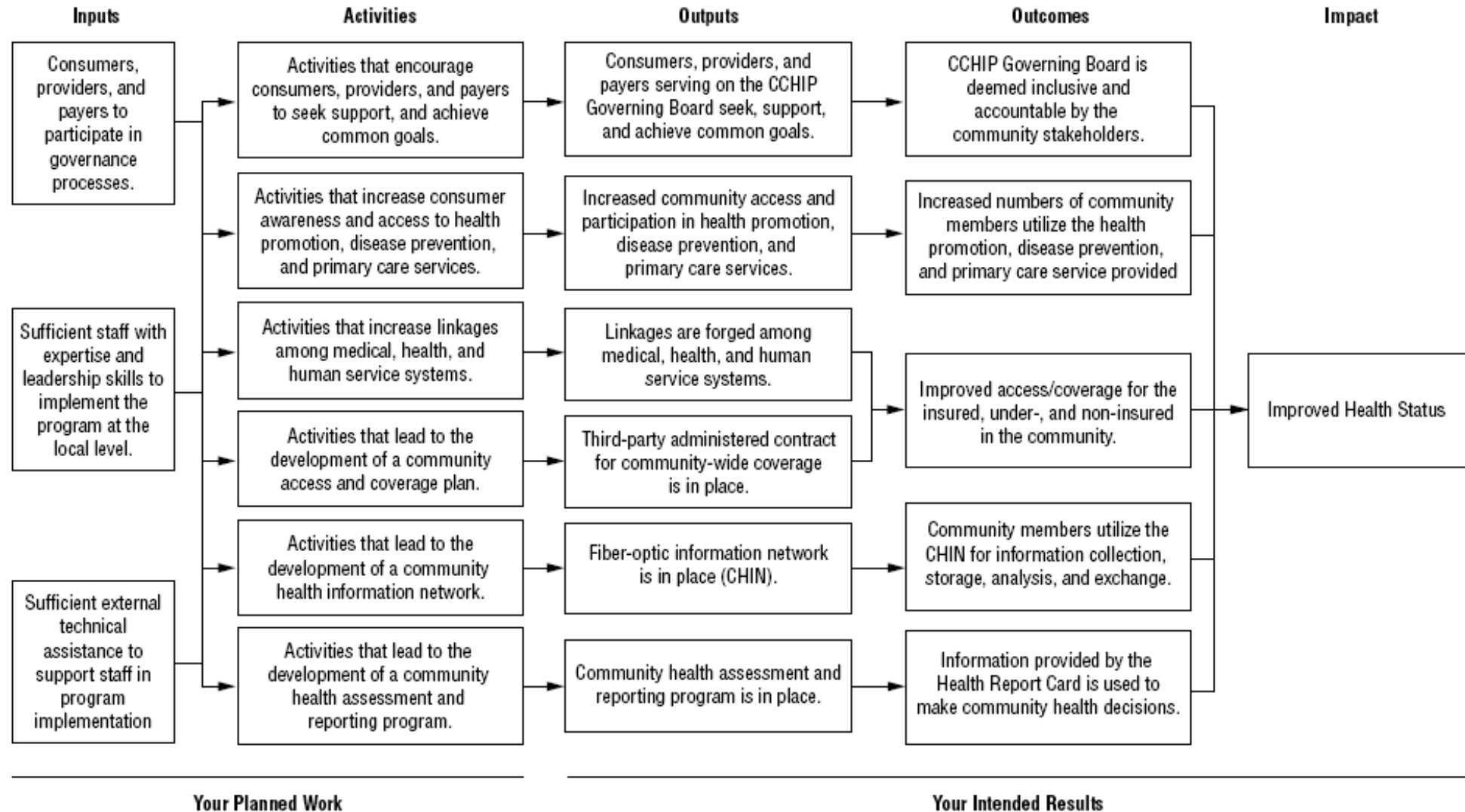


program logic model

Inputs		
MSW Program Manager RN Instructor	Funding Infant Care Curriculum	10 volunteers

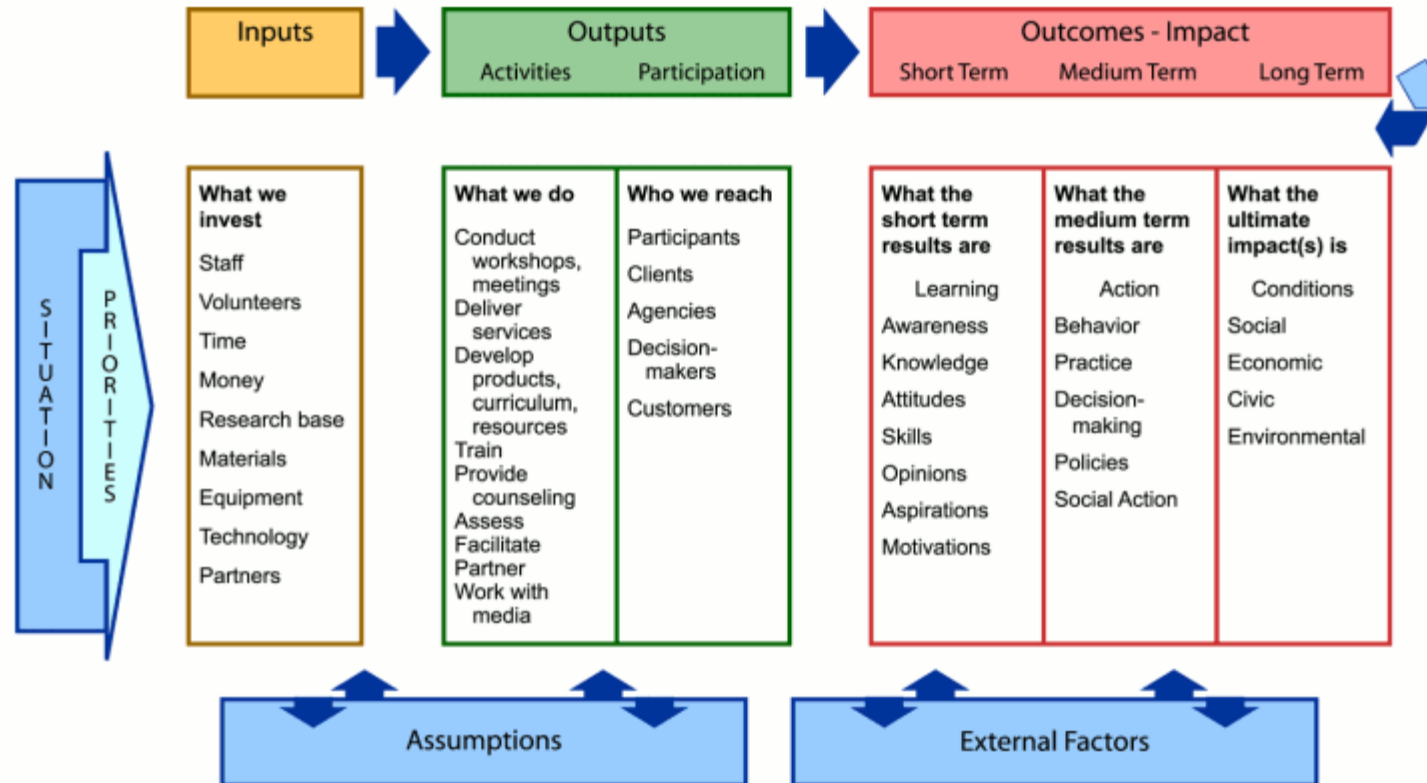
Activities	Outputs	Short-term	Intermediate	Long-Term
Program provides parenting classes on prenatal through infant nutrition, development, safety and care taking delivered in high schools twice a week for one hour to teen mothers from 3 months to one year after delivery of child.	250 pregnant teens attend program. 72 parenting classes provided.	Teens are knowledgeable of prenatal nutrition and health guidelines.	Teens follow proper nutrition and health guidelines. Teens deliver healthy babies.	Babies achieve appropriate 12 month milestones for physical, motor, verbal and social development.
		Teens are knowledgeable of proper care, feeding and social interaction with infants.	Teens provide proper care, feeding, and social interaction to their babies.	

logic model types

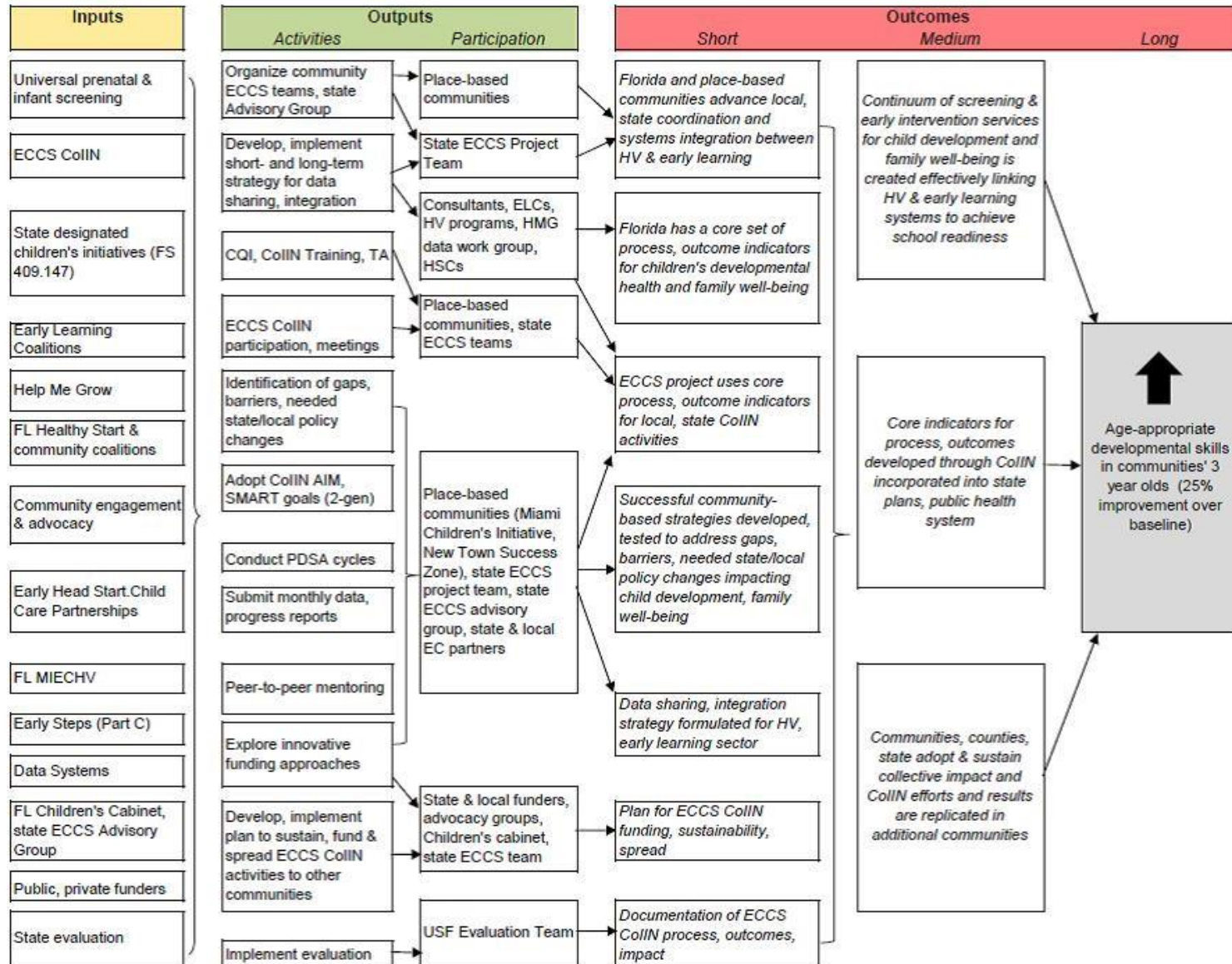


logic model types

Logic Model



logic model types





Short-Term Outcome

The first benefits or changes participants experience, and are the ones most closely related to and influenced by the program's outputs.



*Short term outcomes are
changes in participant's knowledge,
attitudes or skills.*



Intermediate Outcome

Link a program's initial outcomes to the longer-term outcomes it desires for participants.



Intermediate outcomes are changes in behavior that result from participants' new knowledge, attitudes or skills.



Long-Term Outcome

are the ultimate outcomes a program desires to achieve for its' participants.



Long-term outcomes represent meaningful changes in the participant's condition or status.

IF employment counseling for women trying to become financially self-sufficient includes job interviewing skills...

Output



**THEN the women will
give more effective job
interviews.**

Short-term



**IF they give better
interviews, THEN they are
more likely to find jobs.**

Intermediate



**IF they find jobs, THEN
they are more likely to be
financially self-sufficient.**

Long-term





let's practice

20 min.



Single mothers
learn budgeting
skills.

What is it?



building the model

Assignment

- 1. List six program inputs.**
- 2. List program activities.**
- 3. List a minimum of four outputs.**
- 4. Identify two short-term outcomes.**
- 5. Identify two intermediate outcomes.**
- 6. Identify one long-term outcome.**



building the model

Inputs				
Activities	Outputs	Short-term	Intermediate	Long-Term



building the model

40 min.



one

- 200 students
- 100 mentors
- 2 to 1 mentoring, 2x a week, 1 hour
- Group activity 1x per month
- Parent meeting 1x per month

two

- 500 households
- 1,000 harvest food boxes
- Nutrition class 1x per month
- Meal Prep calls 1x per month

three

- 50 students
- 1 to 1 tutoring
- Tutoring 2x per week for 1 hour
- Accelerate Online Learning System daily

four

- 8,000 website visitors
- 20,000 media impressions
- 400 youth
- 100 parents/caregivers
- Annual conference
- Public awareness campaign